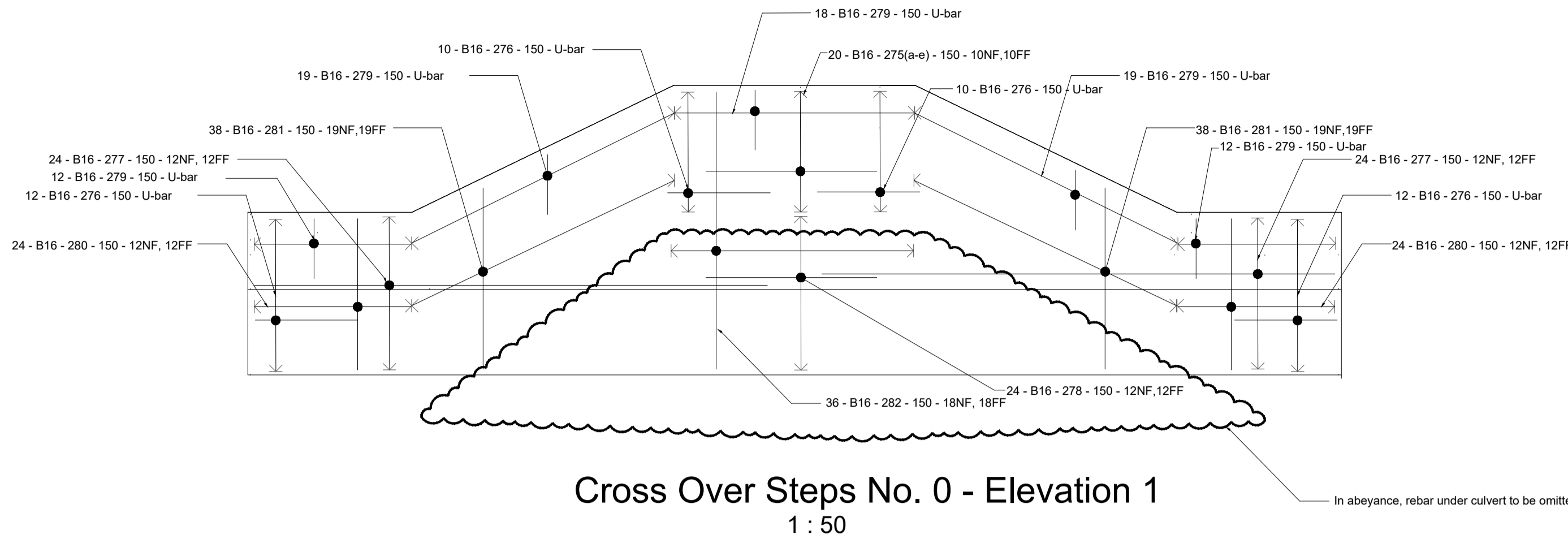
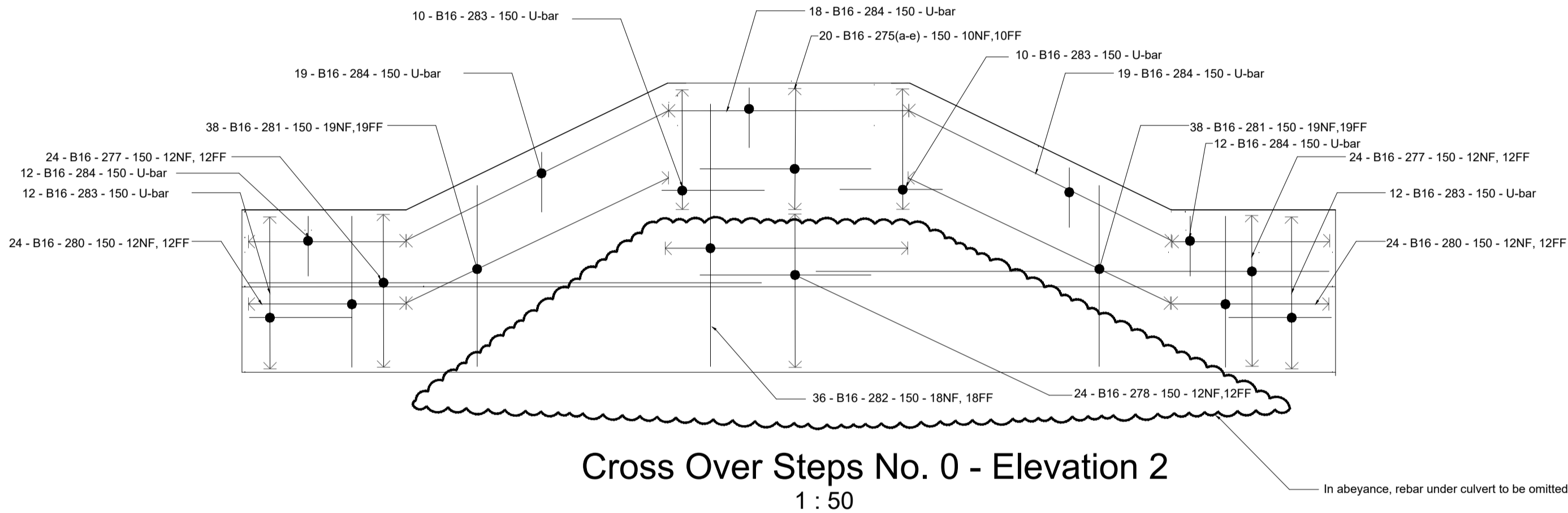


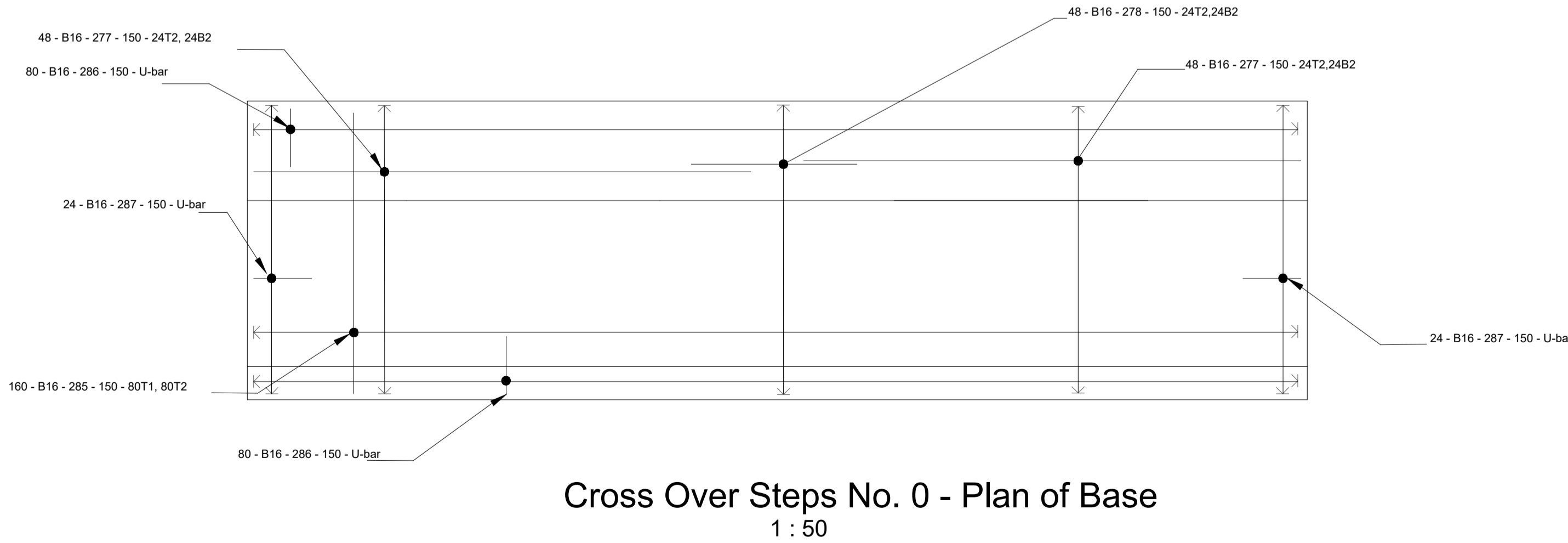
Cross Over Steps No. 0 - Section View  
1 : 25



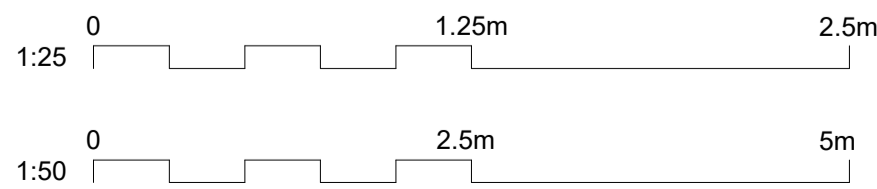
Cross Over Steps No. 0 - Elevation 1  
1 : 50



Cross Over Steps No. 0 - Elevation 2  
1 : 50



Cross Over Steps No. 0 - Plan of Base  
1 : 50

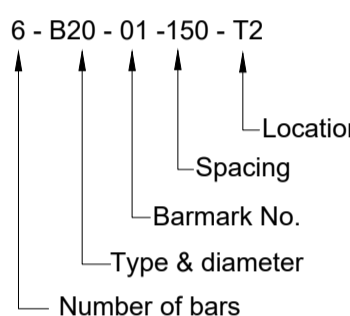


- Notes
1. Reinforced concrete to be Grade C35/45 in accordance with the Specification unless noted otherwise.
  2. No lifting points in visible faces when in the installed arrangement.
  3. Nominal cover to reinforcement is 75mm unless noted otherwise.
  4. All reinforcement to be Grade 500 to BS4449:2005.
  5. All reinforcement to be cut and bent to BS8666:2005.
  6. Minimum reinforcement laps to be 35 times bar diameter

Key to Symbols

Reinforcement Abbreviations

B1	Bottom Face Outer Layer
B2	Bottom Face Second Layer
T1	Top Face Outer Layer
T2	Top Face Second Layer
NF	Near Face
N2	Near Face Second Layer
F1	Far Face Outer Layer
F2	Far Face Second Layer
EF	Each Face
AW	Alternate With
ABR	Alternate Bars Reversed
STG	Staggered



Reference drawings

415437-MMD-00-XX-DR-C-3500 - Coastal General Arrangement Plan  
415437-MMD-00-XX-DR-C-3520 series - Sections & details  
415437-MMD-00-XX-DR-C-3540 series - RC details

C01	23.01.26	RW	Tender Issue	GWM	SS
P01	21.01.26	RW	Tender Issue for Client Acceptance	GWM	SS
Rev	Date	Drawn	Description	Ch'k'd	App'd

Status Stamp

Tender Issue



First Floor, Bryn Eirias  
Abergele Road  
Colwyn Bay  
LL29 8BY  
United Kingdom  
T +44 (0)1492 534601  
W mottmac.com

Client



Title  
Ph.3 - Old Colwyn Promenade Coastal  
Defence & Active Travel Improvements  
Cross Over Steps No. 0  
RC Details

Designed	P.C.O.	Eng. Check	G. Mitchell	
Drawn	R. Williams	Coordination	G. Mitchell	
Dwg. Check	G. Mitchell	Approved	S. Smith	
MMD Project Number	415437	Scale at A1	As indicated	Security STD
Suitability Description	Tender Issue	Suit. Code	A4	
Drawing Number	415437-MMD-00-XX-DR-C-3542	Rev	C01	